



Club Tropical Resort | Stella Resorts Group Affiliate Member

Stella Resorts Group provides access to an extensive range of over 110 resorts, retreats, hotels and apartments throughout Australia and New Zealand's most sought after destinations, including the ski fields of both Hotham and Falls Creek in Victoria.

Hotels and resorts affiliated with the Stella Resorts Group are located in fantastic holiday destinations around Australia. Featuring quality resort facilities and modern accommodation, affiliate resorts offer luxury, service and style in convenient locations.

Club Tropical Resort
Club Tropical Resort is an established 3.5 star resort located in the heart of Port Douglas village. With Four Mile Beach and the Marina Mirage both within a short walking distance, it is a haven from where one can explore the World Heritage listed Great Barrier Reef and the renowned Daintree Rainforest. All rooms are self-contained with kitchenettes located on your own private balcony overlooking the landscaped water gardens, Coral Sea or Mossman Mountains.

Facilities
Facilities include manager on site, tour desk, dry cleaning service, guest laundry, hot spa and sauna, outdoor swimming

pool, baby sitting available and public telephone.

Room Features
One Bedroom and Two Bedroom
Features: Air conditioning, balcony/patio, bath tub, cd player, cook top, daily service, direct dial in rooms, disabled rooms (1 Bed only), guest safe, hair dryer, internet access, iron and ironing board, microwave, mini bar, non smoking rooms (some), refrigerator, vcr and tea and coffee making facilities.

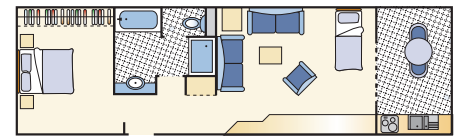
Additional Facilities
Cot hire: no charge
High chair hire: no charge
Hair dryer: no charge
Car hire: organised through reception

Resort Details
Reception Hours: 8.00am - 6.00pm
Triple AAA Rating: 3.5 Star
Year Built: 1989
Number of Rooms: 50
Levels: 3 (Walk up)

Proximities
Distance to Domestic Airport: 60km
Distance to International Airport: 60km
Distance to Main Street: On main street
Distance to Nearest Grocery Store: 50m
Distance to Railway Station: 70km

Floor Plans
Floor plans are indicative only and may vary per apartment.

Floor plan shown is the Standard Room.



Contact Details
Club Tropical Resort
Corner Wharf and Macrossan Street
Port Douglas, QLD 4877
Phone: 1800 080 878 Fax: 07 5665 4466
Email: info@stellaresorts.com.au
Web: www.stellaresorts.com.au

