

BreakFree®

PACIFIC ROYALE



BreakFree Hotels Resorts Apartments

BreakFree Resorts offer an extensive range of over 35 resorts in favourite holiday destinations throughout Australia and New Zealand. Featuring 3.5 to 4.5 star, spacious self contained apartment accommodation, BreakFree Resorts are located close to the best beaches, dining and great holiday attractions.

Representing high quality and great value for money, BreakFree Resorts are located in great family destinations such as Coffs Harbour, Byron Bay, Gold Coast, Sunshine Coast, Tropical North Queensland and Queenstown, New Zealand.

BreakFree Pacific Royale

BreakFree Pacific Royale is a great place to relax and unwind. These luxury low rise apartments are located on The Esplanade in a secluded area of Kingscliff, the Tweed Coast's popular beach destination. Spacious

accommodation and quality furnishings make this resort a great place to get away from it all. Enjoy the resort's pool or take a dip in the pristine beach just a short stroll way.

The stretch of uncrowded beach opposite the property is perfect for swimming as well as being a rewarding fishing spot for anglers.

Choose between a splash in the ocean or a dip in the pool or kick back on the balcony and take in the coastal views and cool sea breeze.

In the evening the beach foreshore offers plenty of areas for a family picnic or the local cafes and eateries along Marine Parade offer a great variety of regional cuisine as well as international style restaurants. BreakFree Pacific Royale offers a holiday location that is both peaceful and convenient.

Resort Facilities

The resort features a security intercom, baby sitting service on request, tour enquiries at reception, cable tv, pool, barbeque area set in lush gardens and security undercover parking.

Resort Details

Reception Hours:
Mon-Sat 8.30am - 5.00pm
Sunday 9.00am - 3.00pm
Standard: BreakFree Quality
AAA Star Rating: 3.5 Star
Year Built: 2000
Number of Rooms: TBA
Levels: 3 storey walkup

Proximities

Beach: 30m
Domestic Airport: 20km
International Airport: 100km
Main Street: On the Esplanade
Nearest Grocery Store: 2km
Railway Station: 34km

"BreakFree Pacific Royale is located in the peaceful seaside village of Kingscliff, the perfect place to relax and unwind and enjoy all the coast has to offer."



Room Features

Two Bedroom

1 Queen + 1 Double + 1 Single + Sofa Bed

Square Metres: TBA

Features: Ceiling fans, large balcony or enclosed courtyard, vcr player, cable tv, kitchen, laundry and ensuite to master bedroom.

Three Bedroom

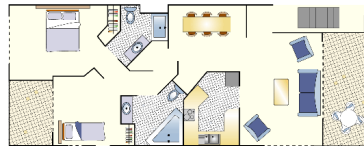
1 Queen + 2 Double + 1 Single + Sofa

Square Metres: TBA

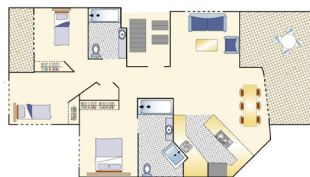
Features: Ceiling fans, large balcony or enclosed courtyard, vcr player, cable tv, ocean views, kitchen, laundry and ensuite with spa to master bedroom.

Floor Plans

Floor plans are indicative only and may vary per apartment.



Two Bedroom



Three Bedroom

*Check in/check out is at BreakFree Paradiso located 300m south of BreakFree Pacific Royale.



BreakFree Pacific Royale

278 - 280 Marine Parade Kingscliff NSW 2487

Phone: 1800 080 878 Fax: 07 5665 4466

Email: info@stellaresorts.com.au

Web: www.stellaresorts.com.au

Sales and Marketing Enquiries

Email: sales@stellaresorts.com.au

Email: marketing@stellaresorts.com.au